

Siesta Key

28/32 Series

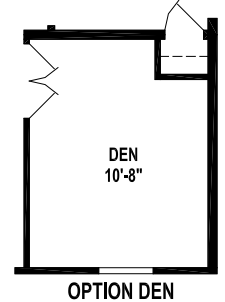
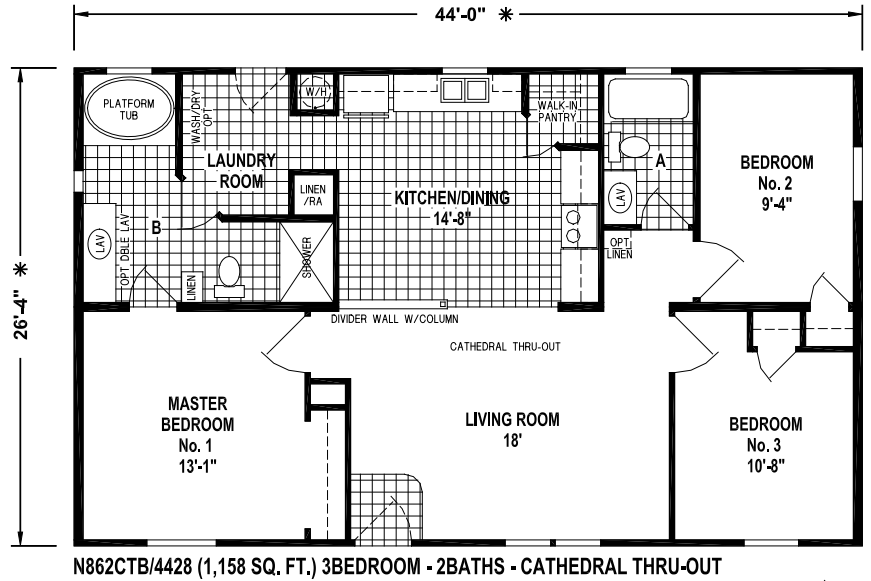
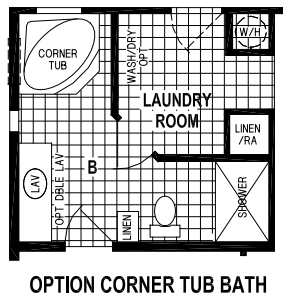
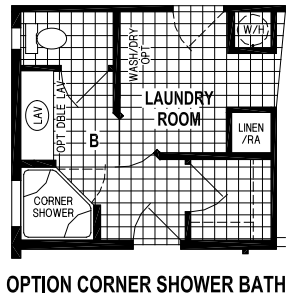
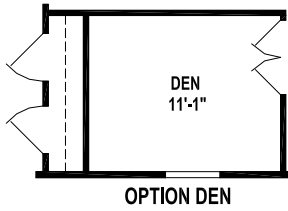
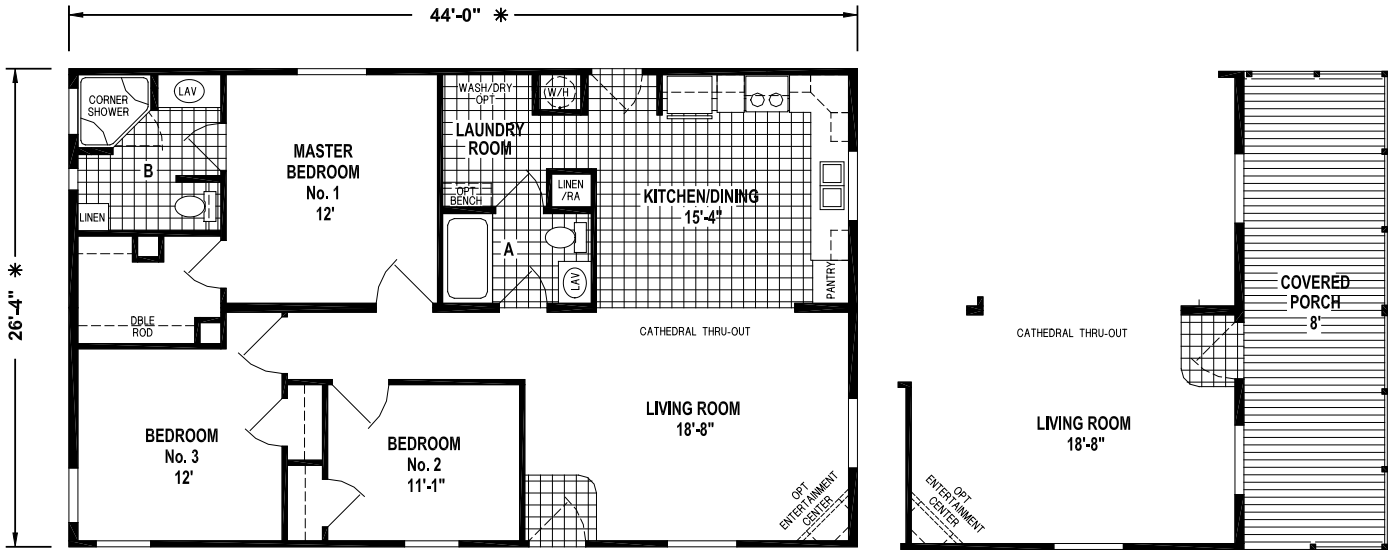


Some Items Shown May Be Optional

Your Local *Siesta Key* Dealer is:

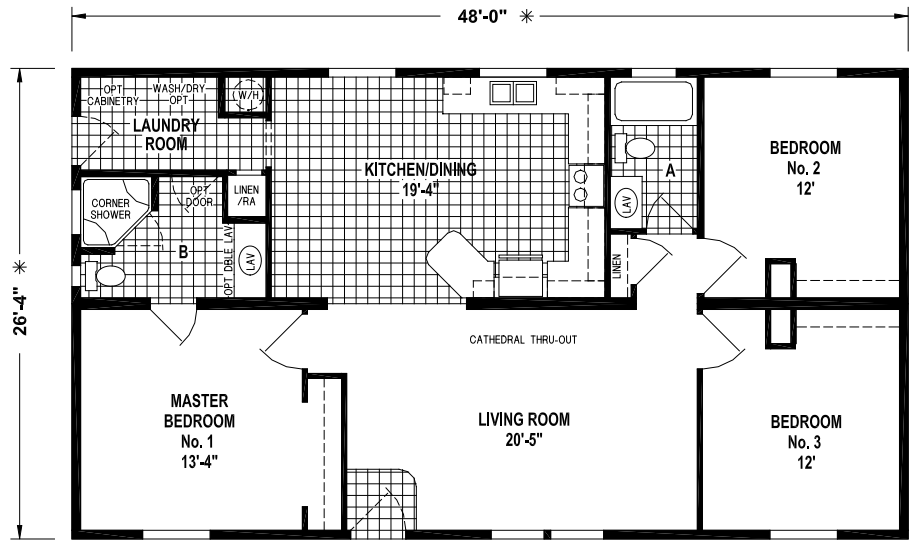


SKYLINE[®]
BRINGING AMERICA HOME. BRINGING AMERICA FUN.

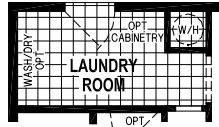


Siesta Key

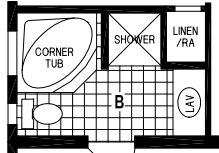
28 Series



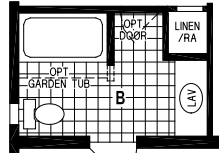
N805CT/4828 (1,264 SQ. FT.) 3BEDROOM - 2BATHS - CATHEDRAL THRU-OUT



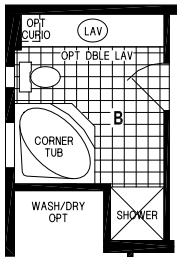
OPTION LAUNDRY ROOM



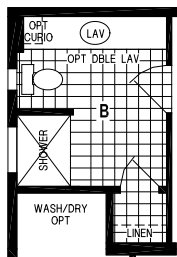
OPTION CORNER TUB BATH



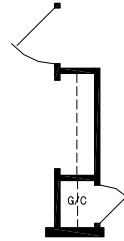
OPTION MASTER BATH



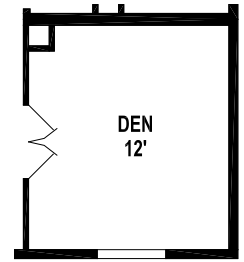
OPTION CORNER TUB BATH



OPTION 48" SHOWER



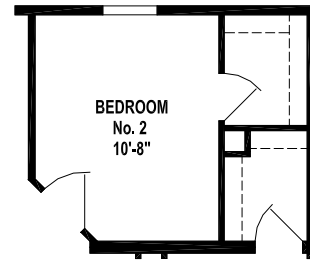
OPTION GUEST CLOSET



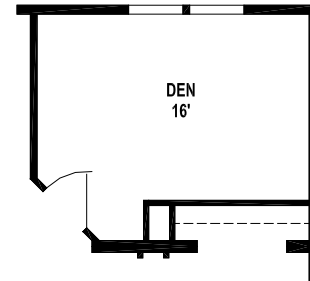
OPTION DEN



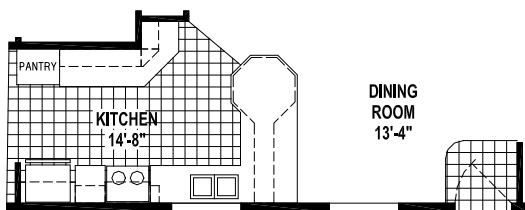
N807CT/5228 (1,369 SQ. FT.) 3BEDROOM - 2BATHS - CATHEDRAL THRU-OUT



OPTION BEDROOM ENTRY



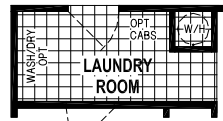
OPTION DEN



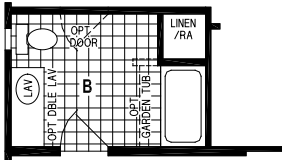
OPTION KITCHEN

Siesta Key

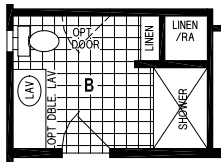
28 Series



OPTION LAUNDRY ROOM



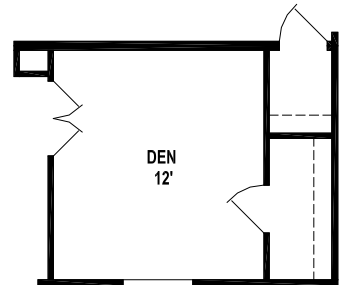
OPTION MASTER BATH



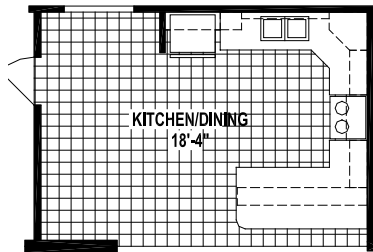
OPTION 54" SHOWER



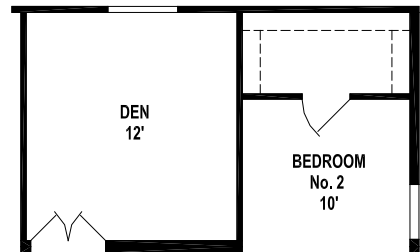
N875CT/5428 (1,422 SQ.FT.) 3BEDROOM - 2BATHS - CATHEDRAL THRU-OUT



OPTION DEN



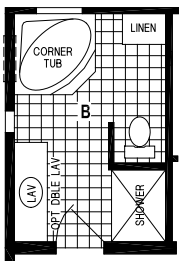
OPTION KITCHEN



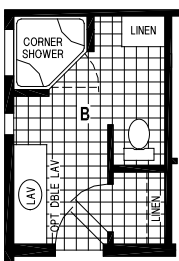
OPTION DEN



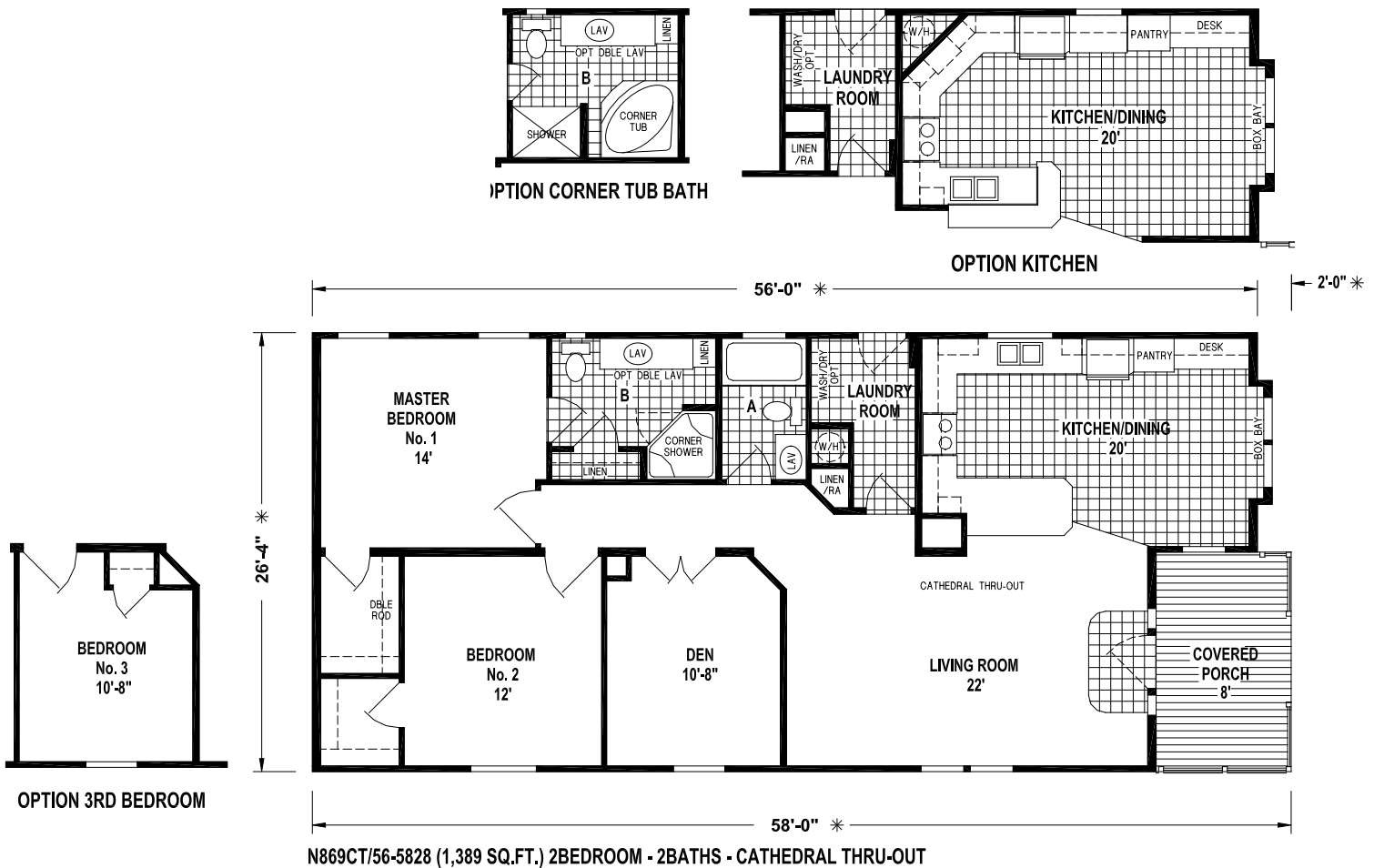
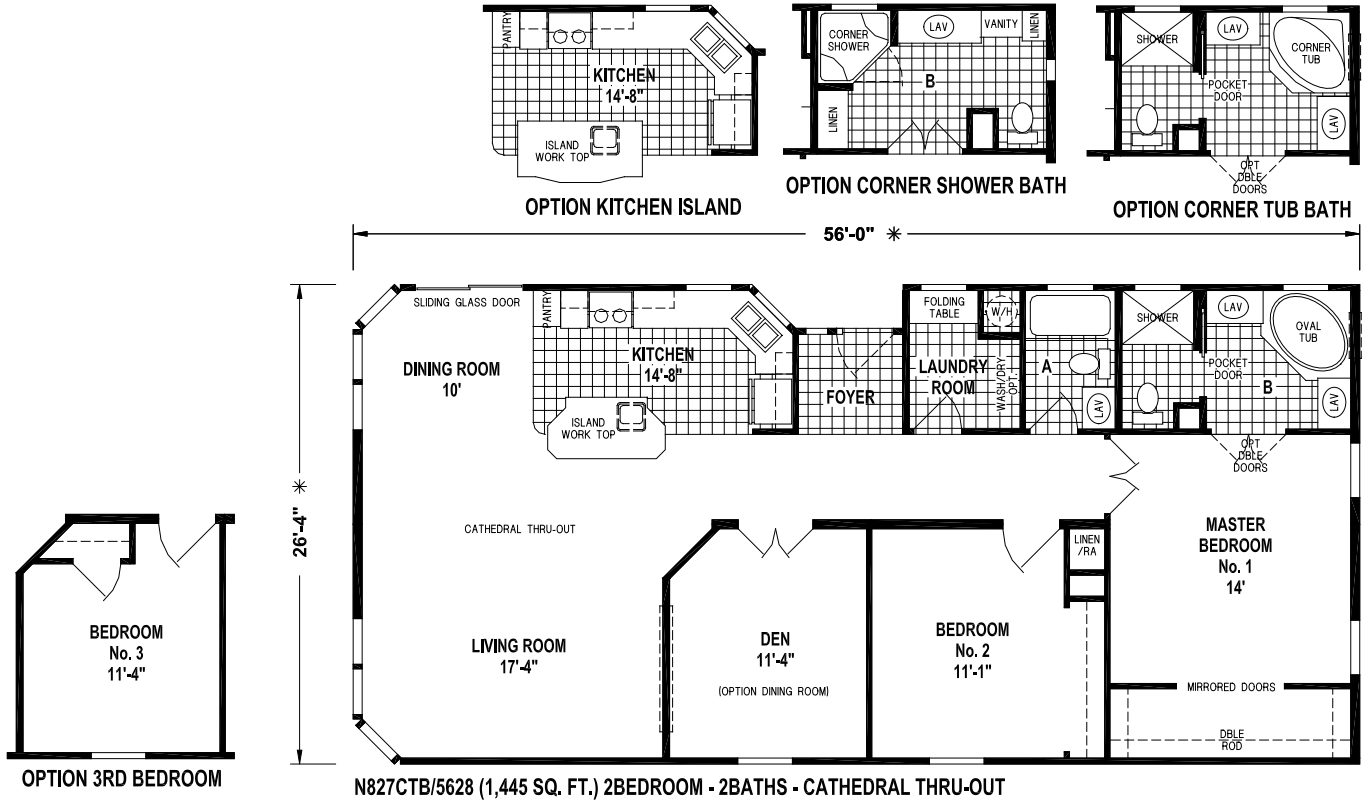
N819CTB/5628 (1,474 SQ. FT.) 4BEDROOM - 2BATHS - CATHEDRAL THRU-OUT

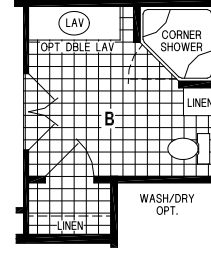


OPTION CORNER TUB BATH

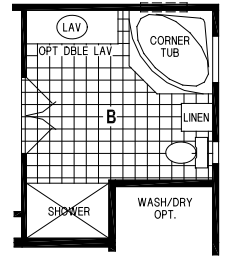


4 OPTION CORNER SHOWER BATH

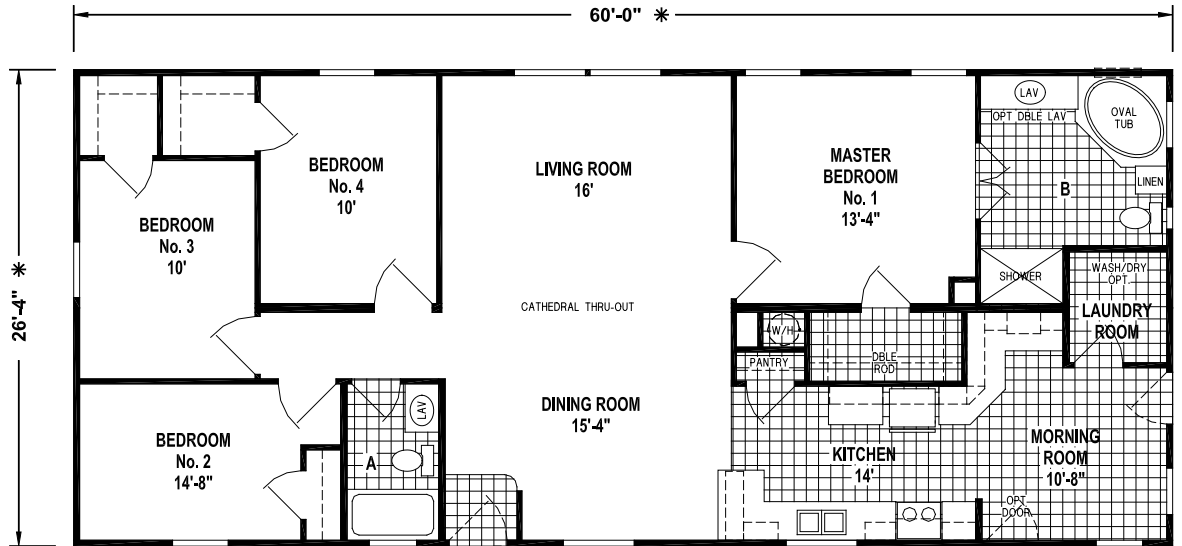




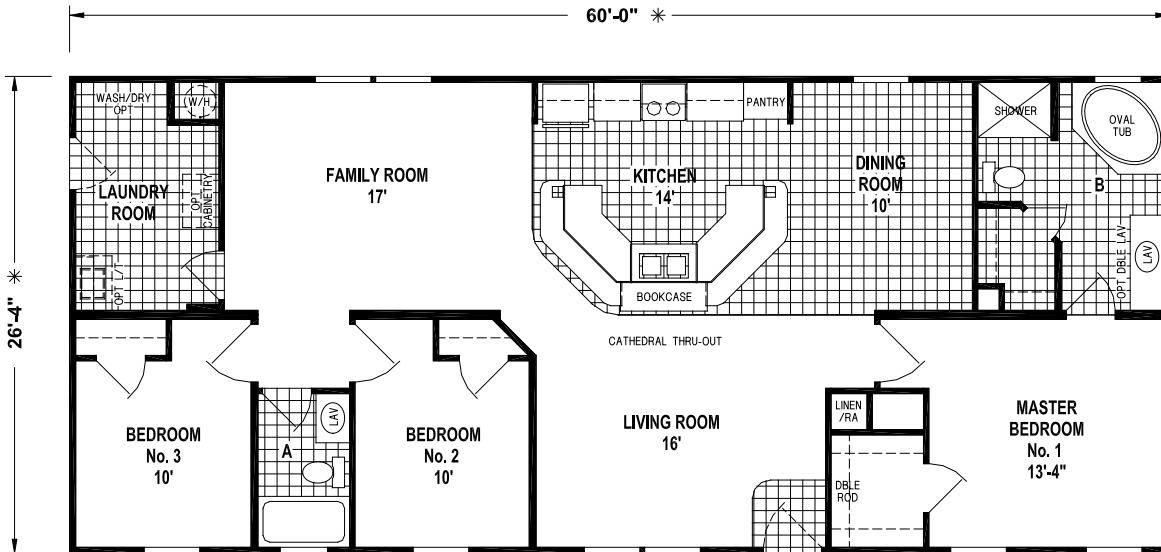
OPTION CORNER SHOWER BATH



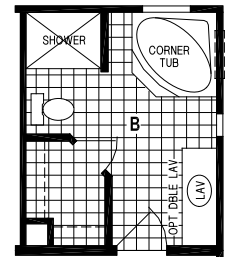
OPTION CORNER TUB BATH



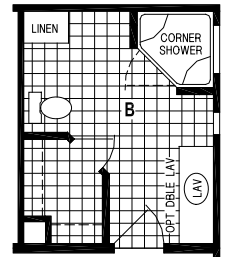
N821CTB/6028 (1,580 SQ. FT.) 4BEDROOM - 2BATHS - CATHEDRAL THRU-OUT



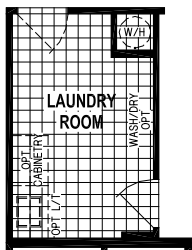
N824CTB/6028 (1,580 SQ. FT.) 3BEDROOM - 2BATHS - CATHEDRAL THRU-OUT



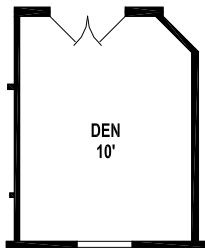
OPTION CORNER TUB BATH



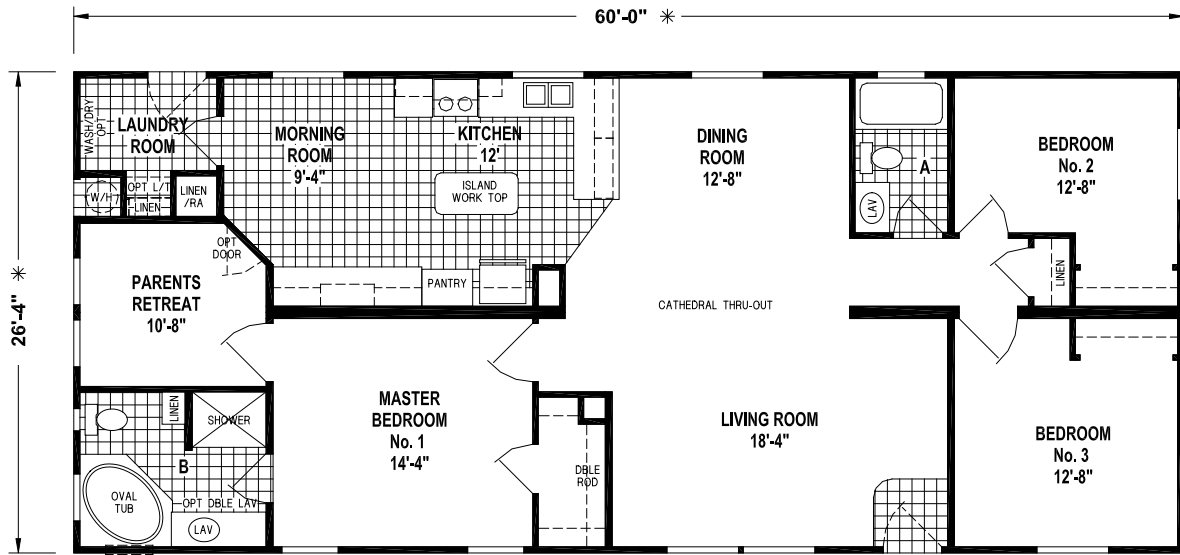
OPTION CONRER SHOWER BATH



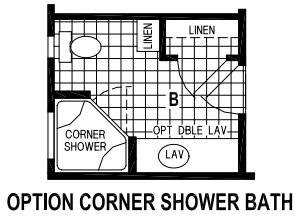
OPTION LAUNDRY ROOM



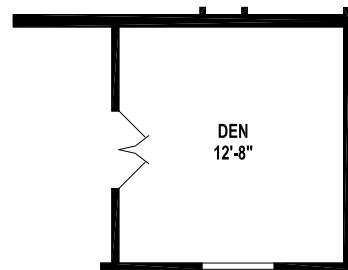
OPTION DEN



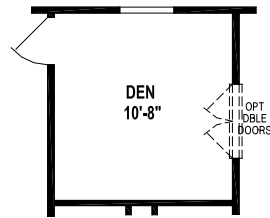
N874CTB/6028 (1,580 SQ. FT.) 3BEDROOM - 2BATHS -- CATHEDRAL THRU-OUT



OPTION CORNER SHOWER BATH

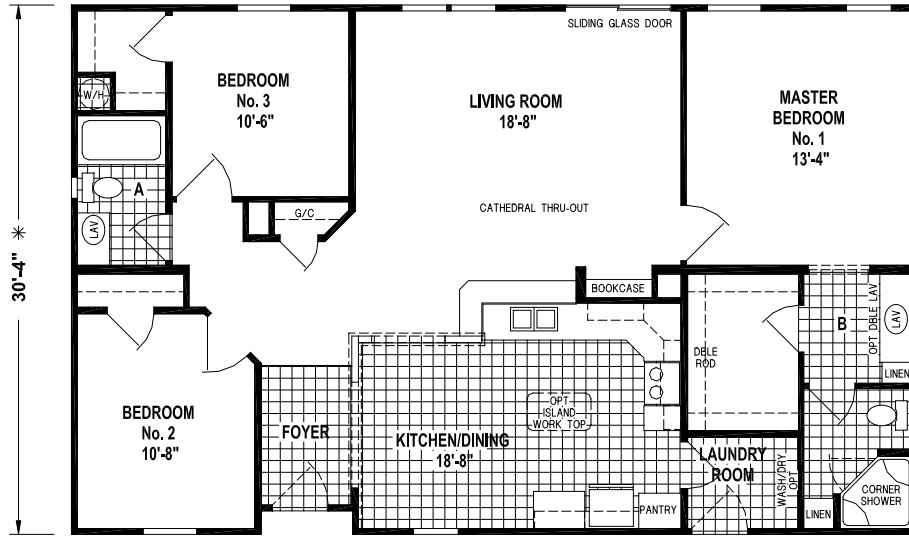


OPTION DEN

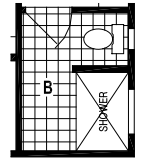


OPTION DEN

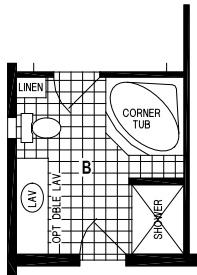
48'-0" *



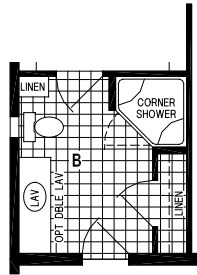
N901CT/4832 (1,448 SQ. FT.) 3BEDROOM - 2BATHS - CATHEDRAL THRU-OUT



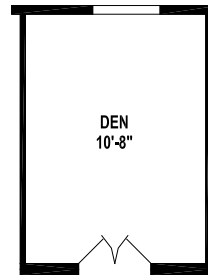
OPTION 54" SHOWER



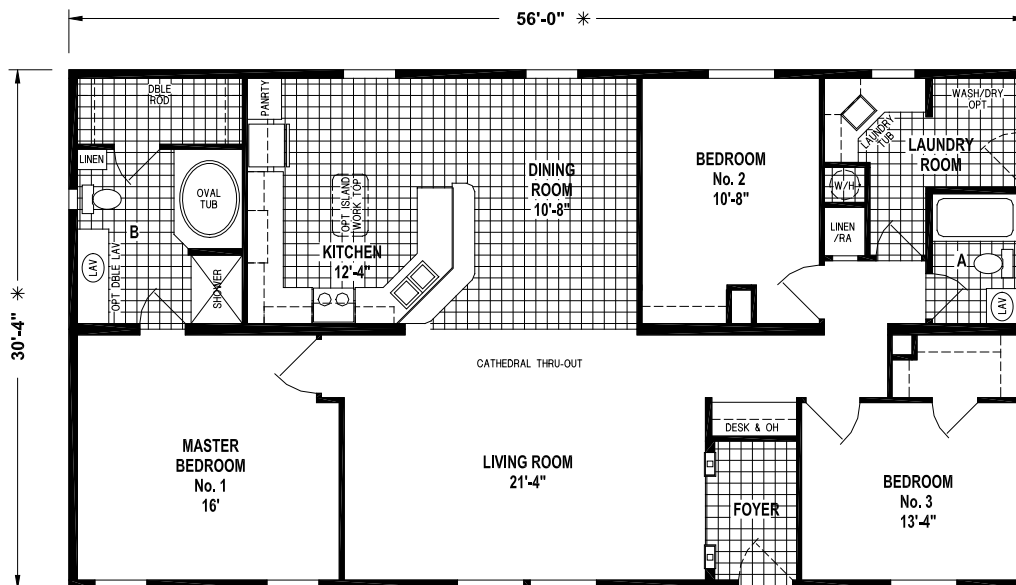
OPTION CORNER TUB BATH



OPTION CORNER SHOWER BATH



OPTION DEN



N936CT/5632 (1,698 SQ. FT.) 3BEDROOM - 2BATHS - CATHEDRAL THRU-OUT

Siesta Key

28/32 Series

Standard Features

Exterior and Construction

- Detachable Hitch
- Gang-Nail Rafter System
- 25 Year A/R Shingles
- Roof Vents w/Roof Caps
- Dry Ply Shingle Underlayment
- 20# Roof Load
- 7" Overhangs
- Vented Soffit
- Galvanized Drip Edge
- 8'-0" Side Wall Height
- 2 x 6 Exterior Walls
- Vinyl Lap Siding
- 3/8" OSB Exterior Sheathing
- Fiberglass Front Door w/Sunburst Window & Storm
- Fiberglass 9-Lite Rear Door w/Storm
- Dead Bolts
- Sliding Glass Door w/Grids — Per Floor Plan
- Vinyl Single Hung Windows w/Low "E" Glass
- Window Grids
- Perimeter Gang Nailing Floors
- Vapor-Barrier Bottom Wrap
- Sanitary Drain Prep
- OSB Roof Decking
- OSB Tongue & Groove Floor Decking
- Vent for Dryer
- 2 x 6 Floor Joists, 16" O.C. (28W)
- 2 x 8 Floor Joists, 16" O.C. (32W)
- Moisture Seal On Floors — All Wet Area
- Heavy Duty Steel "I" Beam Frame
- Egress Window in Bedrooms
- Pre-Finished Doors Jamb

Electric

- 200 AMP Electrical Service
- Copper Wiring
- Smoke Detectors w/Battery Backup & False Alarm Control
- Exterior Receptacle w/Ground Fault Interrupter
- Exterior Receptacle Under Home @ Main Water Line
- Ground Fault Interrupter — All Baths
- Ground Fault Interrupter at Kitchen Sink Area
- Easy Access Interior Electrical Breaker Box
- Patio Lights — All Exterior Doors
- Dining Chandelier
- Glass Ceiling Lights
- Lighted Walk-In Closets w/Wall Switch Per Floor Plan
- Wire For Dryer
- Wire/Brace for Ceiling Fan in Living Room & Master Bedroom

Plumbing

- CPVC Plumbing Fittings
- Stainless Steel Kitchen Sink w/Single Lever Faucet & Sprayer
- 30 Gallon Electric Water Heater
- Plumb For Washer
- Water Shut-Off Valves at All Fixtures & Main

Insulation and Air Conditioning

- R-19 Ceiling Insulation
- R-19 Side Wall Insulation
- R-11 Floor Insulation
- Engineered Overhead Duct System
- Whole House Ventilation System
- White Multi-Direction Ceiling Grills
- Filter Grill w/Filter Installed
- 14" Metal Collar Drop-Out For Return Air
- 12" Metal Collar Drop-Out For Air Supply

Living Areas

- Cathedral Ceiling Throughout
- Textured Ceiling
- Door Stops
- 1/2" Finished Drywall Throughout
- Valances w/Wood Blinds
- Plush Carpet
- 5 lb. Rebond Carpet Pad w/Tack Strip
- Closet Maid Wire Shelves in Closets
- Vinyl Floor at Front Door
- Lever Latch Door Handles

Kitchen Features

- Valance w/Wood Blinds
- 18 cu. ft. Frost Free Refrigerator
- 30" Full Size Deluxe Electric Range
- 30" Power Range Hood w/Light
- Bumped Up & Out Overhead Above Range
- Drawer Over Door Base Cabinet Construction
- Oak Flat Panel Cabinet Doors
- Ceramic Bullnose Backsplash
- Designer Cabinet Knobs
- Residential Hidden Cabinet Door Hinges
- Lined Overhead Cabinets w/Adjustable Shelves
- Pantry — Per Floor Plan
- Bank of Drawers
- Recessed Lighting

Bath Features

- Drop-In Oval Tub w/Free Standing Shower Stall in Master Bath Per Floor Plan
- Lavatory Mirror
- Power Vent — All Baths
- Oak Flat Panel Cabinet Doors
- Seamless Vanity Tops
- Ceramic Bullnose Backsplash
- Dual Handle Faucet at Lav
- Designer Cabinet Door Knobs
- Residential Hidden Cabinet Door Hinges
- Residential Raised Lav Bases
- Elongated China Commodes
- Towel Bars & Tissue Holders
- Cosmetic Light Bars Over Lav Mirrors
- Radius Shower Rod w/Curtain & Rings at All Tubs
- Area Light w/Vent
- 1-Piece Fiberglass Tub/Shower in Hall Bath



SKYLINE[®]
BRINGING AMERICA HOME. BRINGING AMERICA FUN.

For your comfort and safety, Skyline home designs are approved and inspected for conformance to Federal standards.

* Dimensions stated to industry standards. Width and length dimensions are nominal and are not to be used for setup of home on site; consult selling retailers for exact specifications. Overall length does not include approximately four foot hitch. The square footage is approximate and based upon nominal exterior floor size. Room sizes are measured from floor ends and wall centers.

Because of progressive product improvement, all prices & specifications are subject to change without prior notice or obligation to Skyline Corporation.

Your Retailer, an independent contractor, who is not an agent of Skyline Corporation, is the party responsible for your purchase contract and any additions, deletions, alterations, or attachments made to or in your home.



SKYLINE[®]

BRINGING AMERICA HOME. BRINGING AMERICA FUN.

Visit us at our web site at www.skylinecorp.com