

Silver Springs Community

22/24/28/32 SERIES

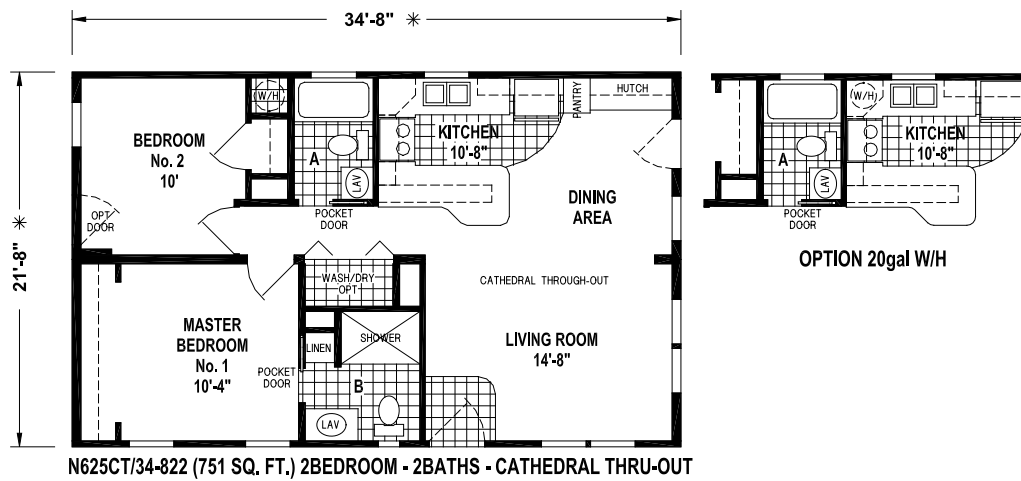
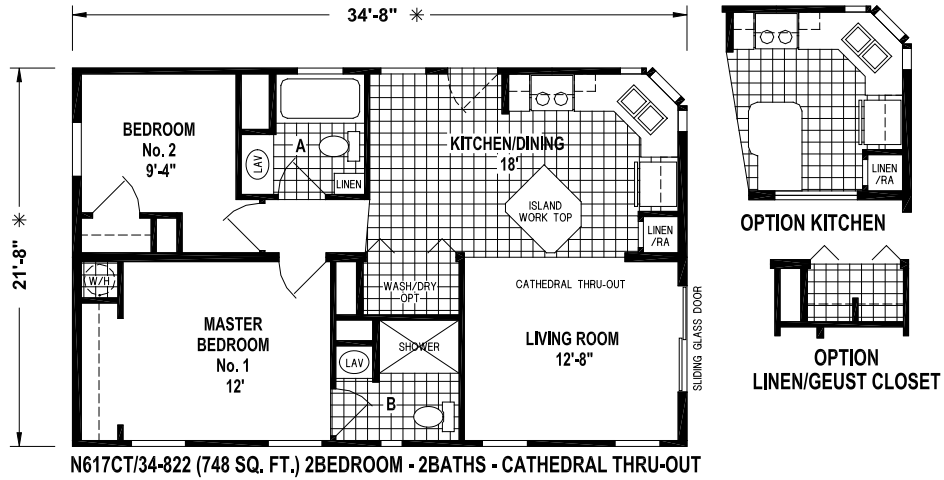


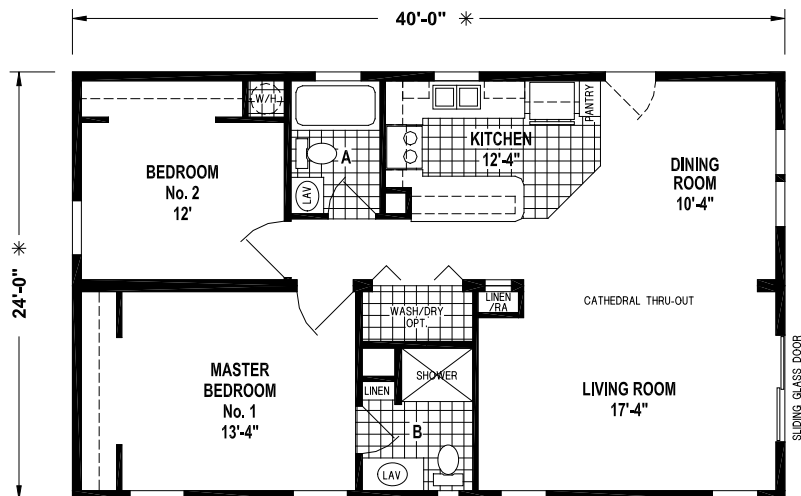
SOME ITEMS SHOWN MAY BE OPTIONAL

YOUR LOCAL *Silver Springs Community* DEALER IS:

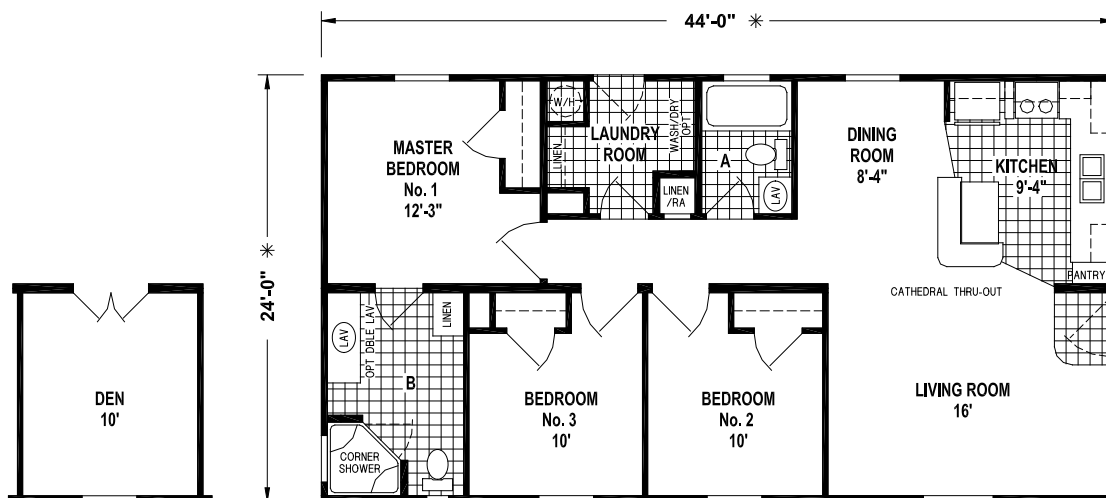


SKYLINE[®]
BRINGING AMERICA HOME. BRINGING AMERICA FUN.



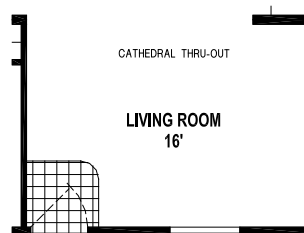


N763CT/4024 (960 SQ. FT.) 2BEDROOM - 2BATHS - CATHEDRAL THRU-OUT

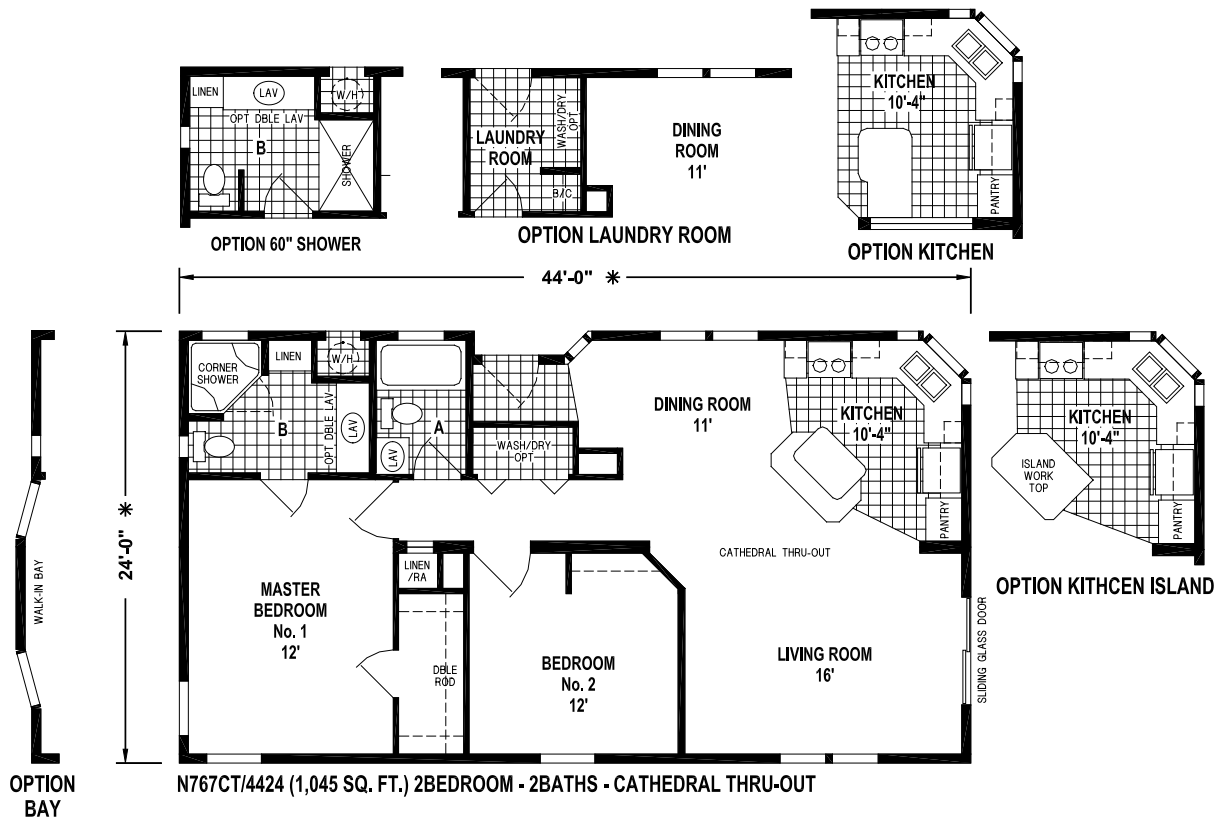


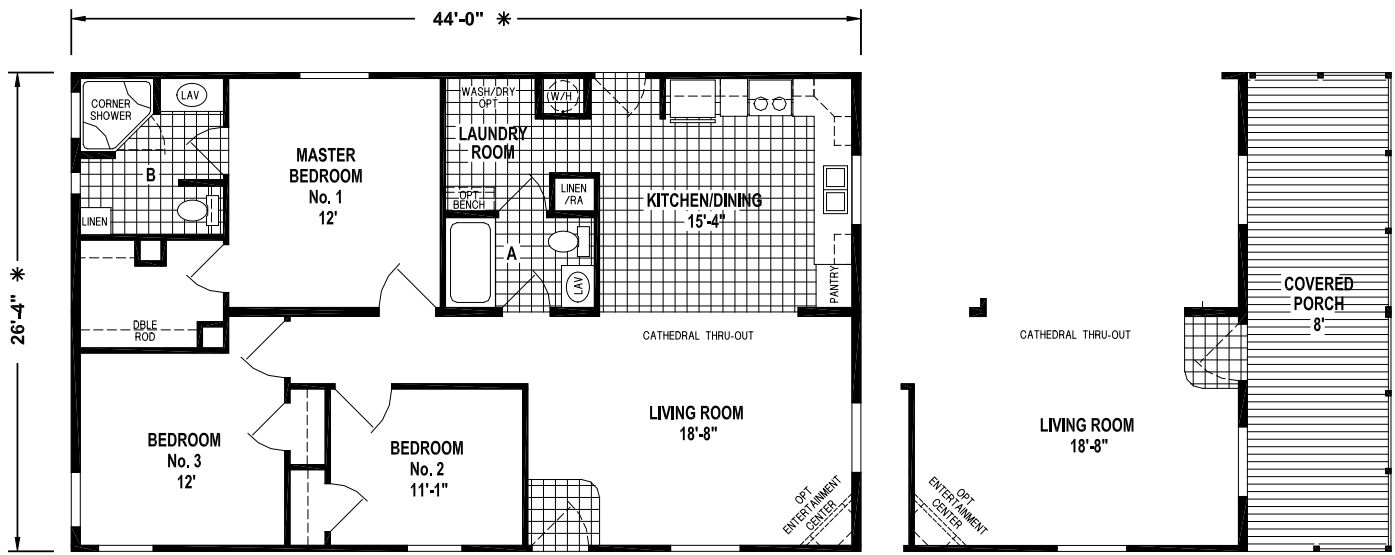
OPTION DEN

N717CT/4424 (1,056 SQ. FT.) 3BEDROOM - 2BATHS - CATHEDRAL THRU-OUT



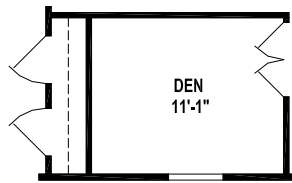
ALTERNATE DOOR LOCATION



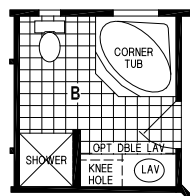


N810CT/4428 (1,158 SQ. FT.) 3BEDROOM - 2BATHS - CATHEDRAL THRU-OUT

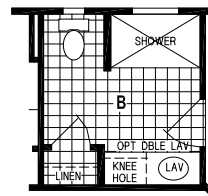
OPTION PORCH / ALTERNATE ENTRY



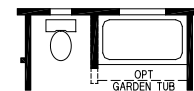
OPTION DEN



OPTION CORNER TUB BATH



OPTION 60" SHOWER



OPTION 60" TUB/GT

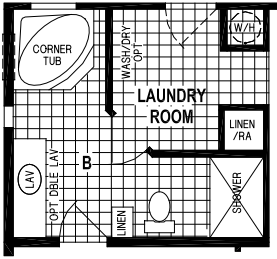


OPTION DEN

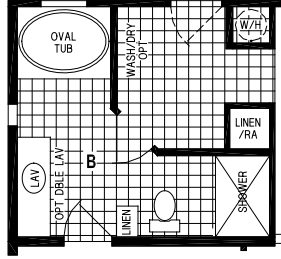
N829CT/4428 (1,158 SQ. FT.) 3BEDROOM - 2BATHS - CATHEDRAL THRU-OUT

Silver Springs Community

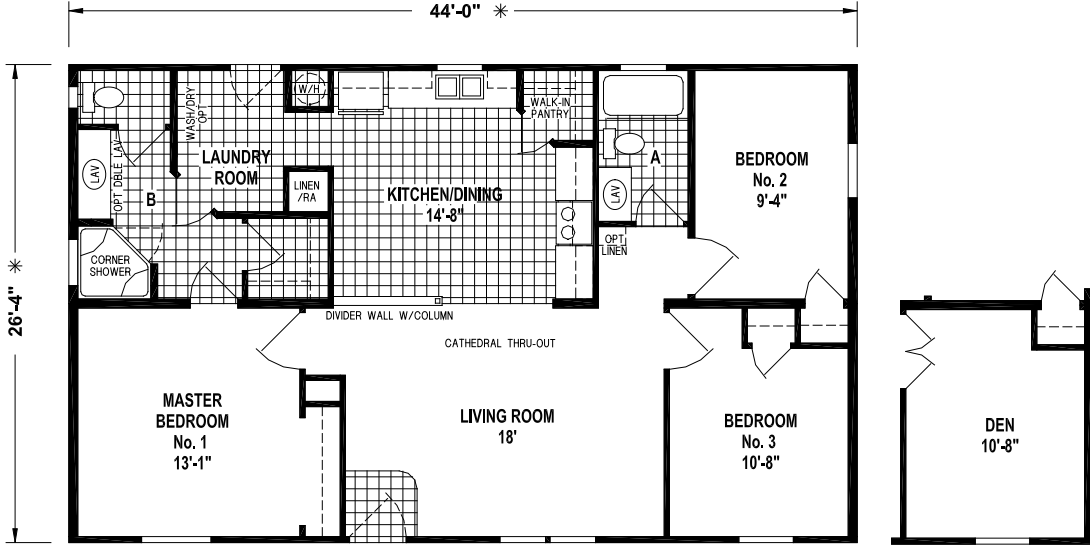
28 SERIES



OPTION CORNER TUB BATH

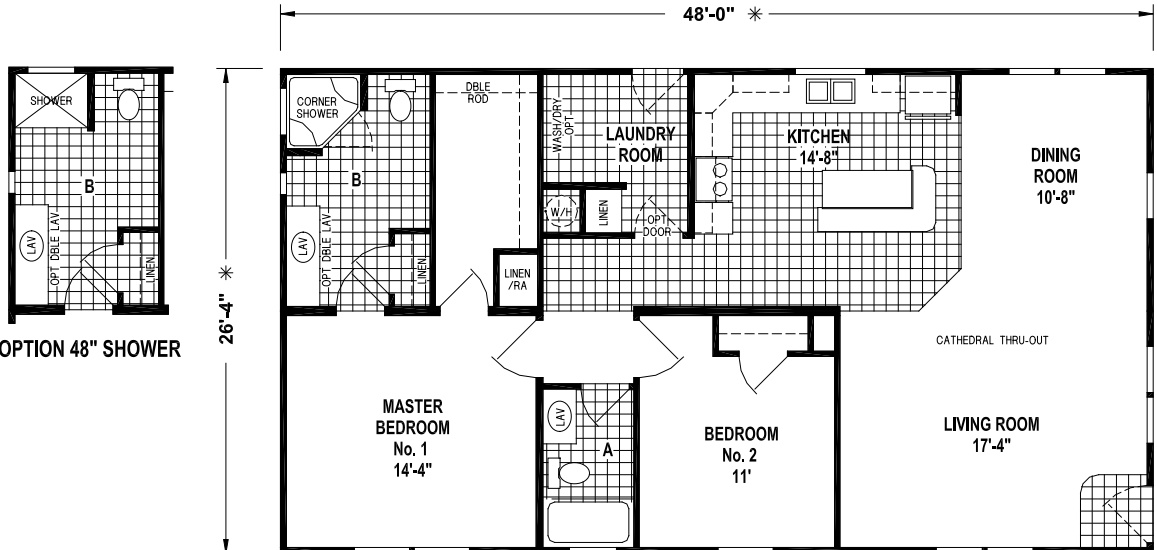


OPTION OVAL TUB BATH



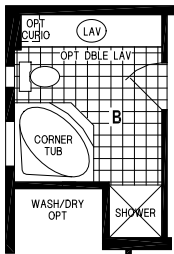
N862CT/4428 (1,158 SQ. FT.) 3BEDROOM - 2BATHS - CATHEDRAL THRU-OUT

OPTION DEN

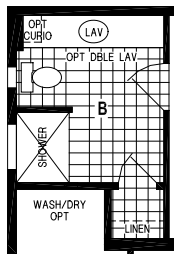


OPTION 48" SHOWER

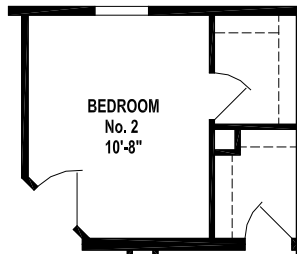
N846CT/4828 (1,264 SQ. FT.) 2BEDROOM - 2BATHS - CATHEDRAL THRU-OUT



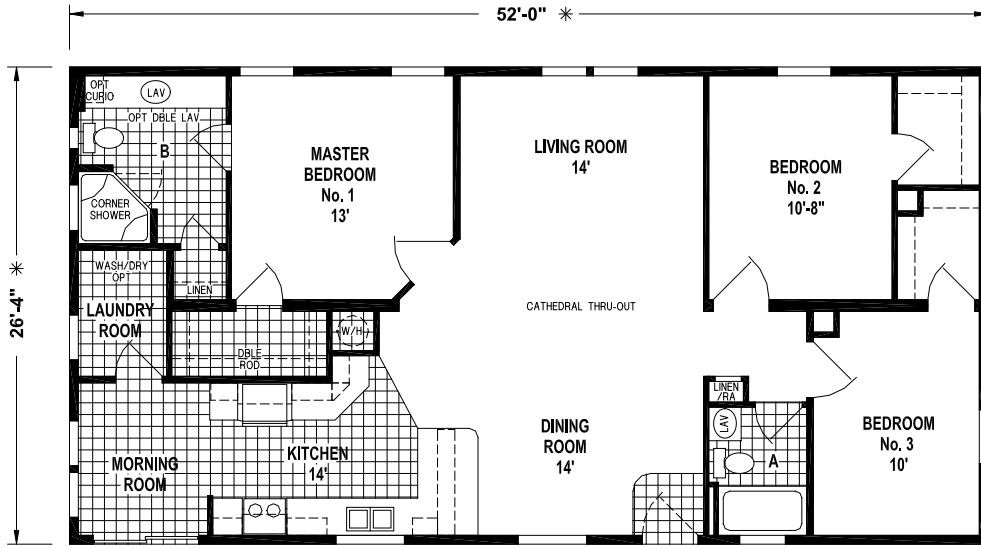
OPTION CORNER TUB BATH



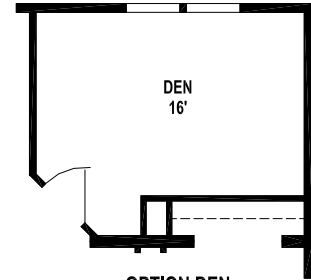
OPTION 48" SHOWER



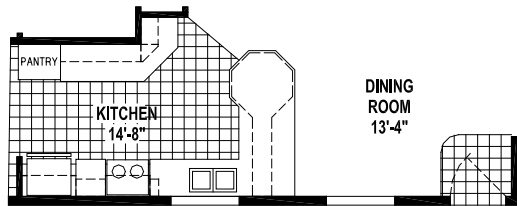
OPTION BEDROOM ENTRY



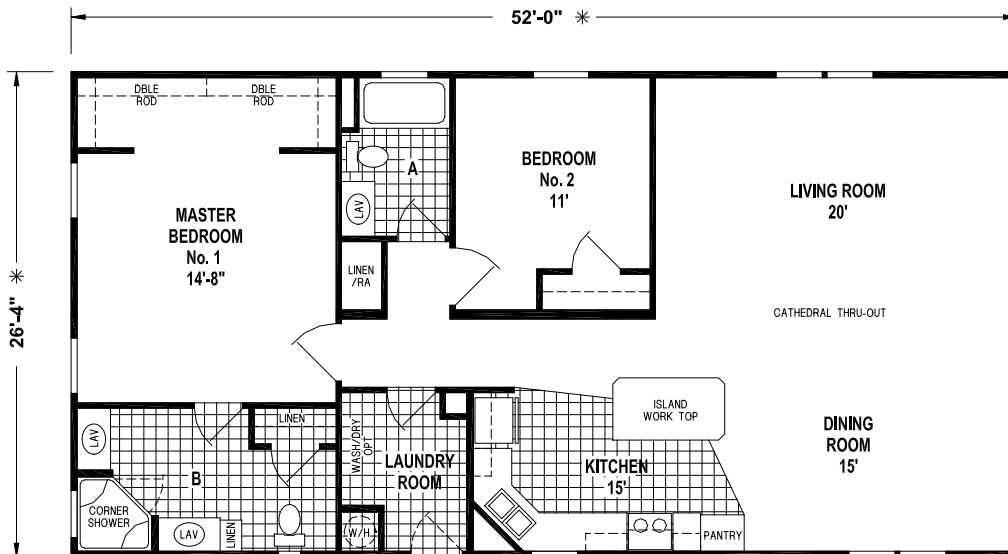
N807CT/5228 (1,369 SQ. FT.) 3BEDROOM - 2BATHS - CATHEDRAL THRU-OUT



OPTION DEN



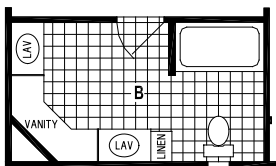
OPTION KITCHEN



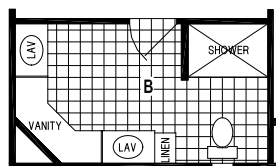
N847CT/5228 (1,369 SQ. FT.) 2BEDROOM - 2BATHS - CATHEDRAL THRU-OUT



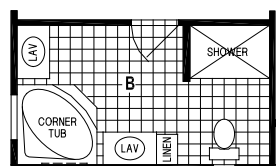
OPTION COVERED PORCH



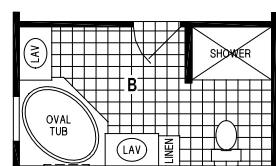
OPTION 60" TUB



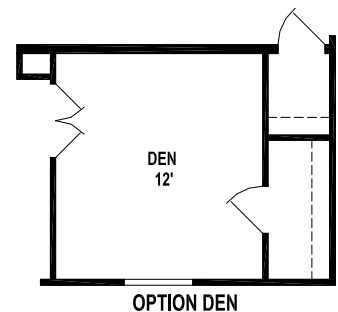
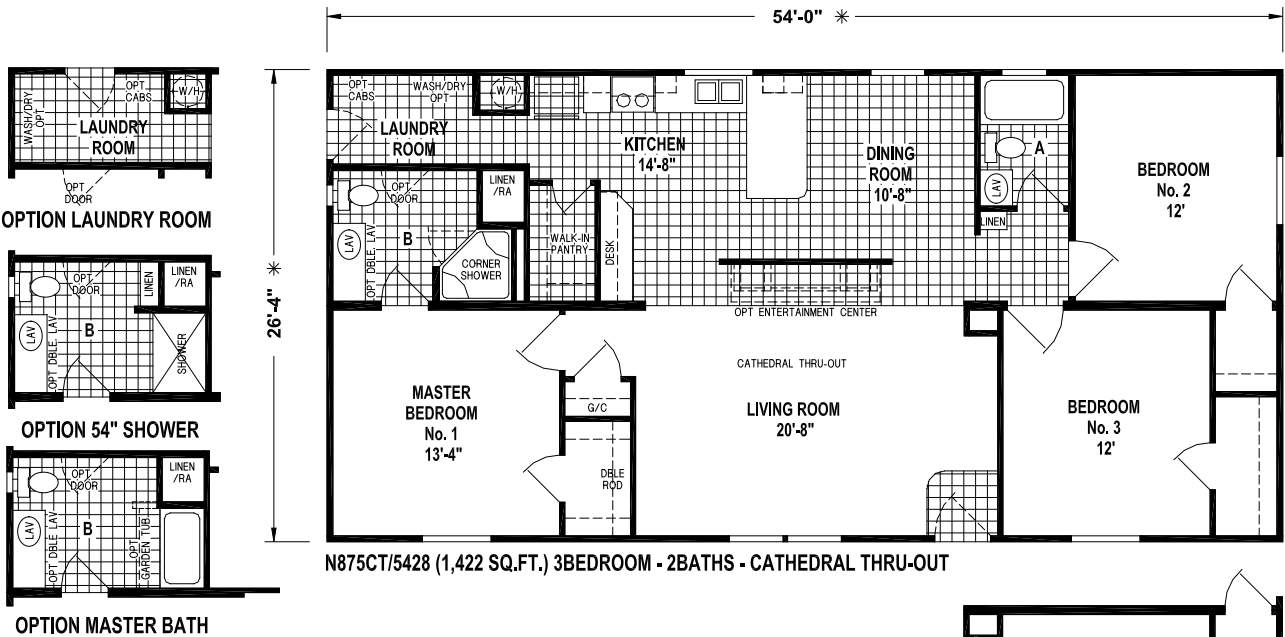
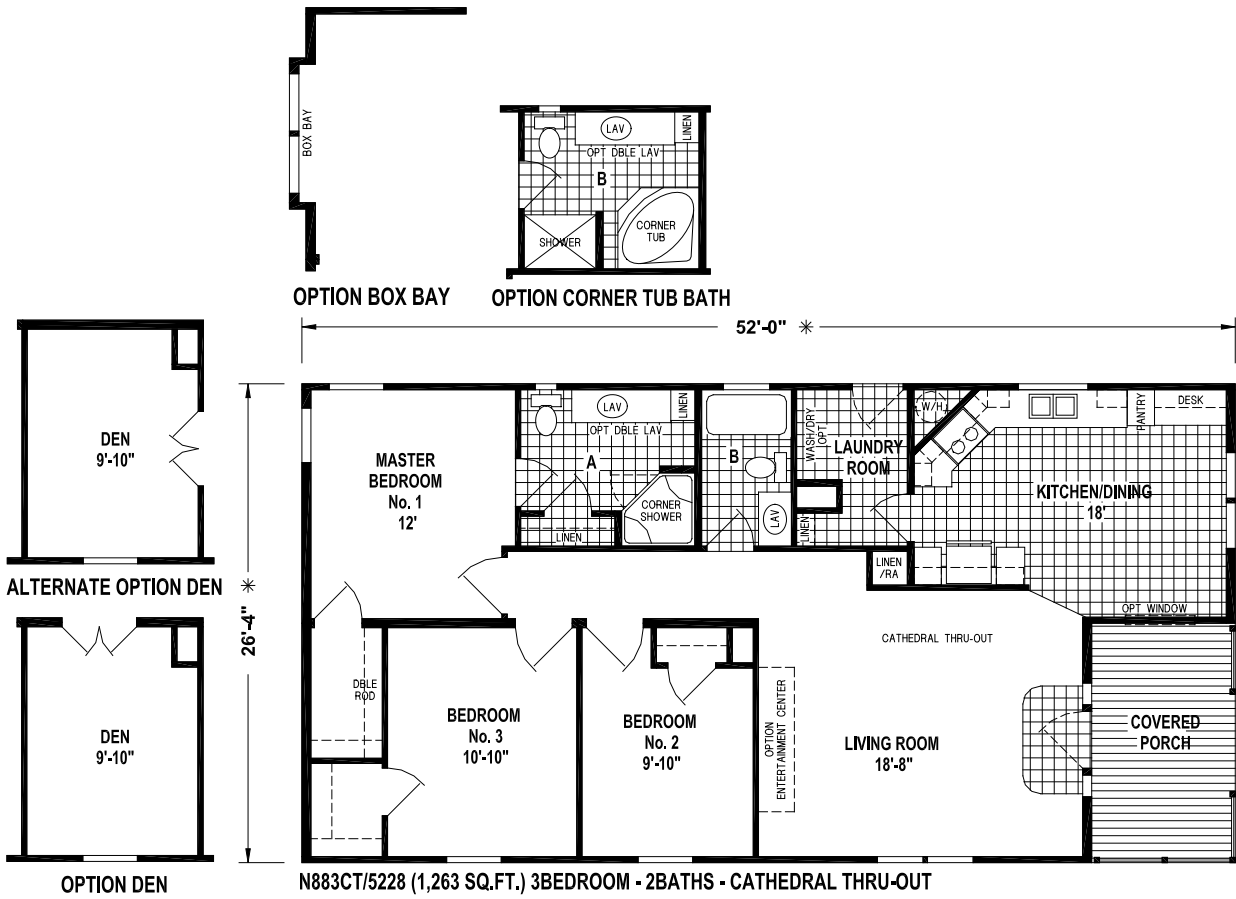
OPTION 54" SHOWER

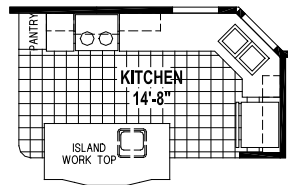


OPTION CORNER TUB BATH

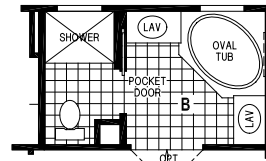


OPTION OVAL TUB BATH

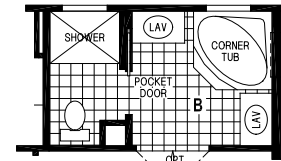




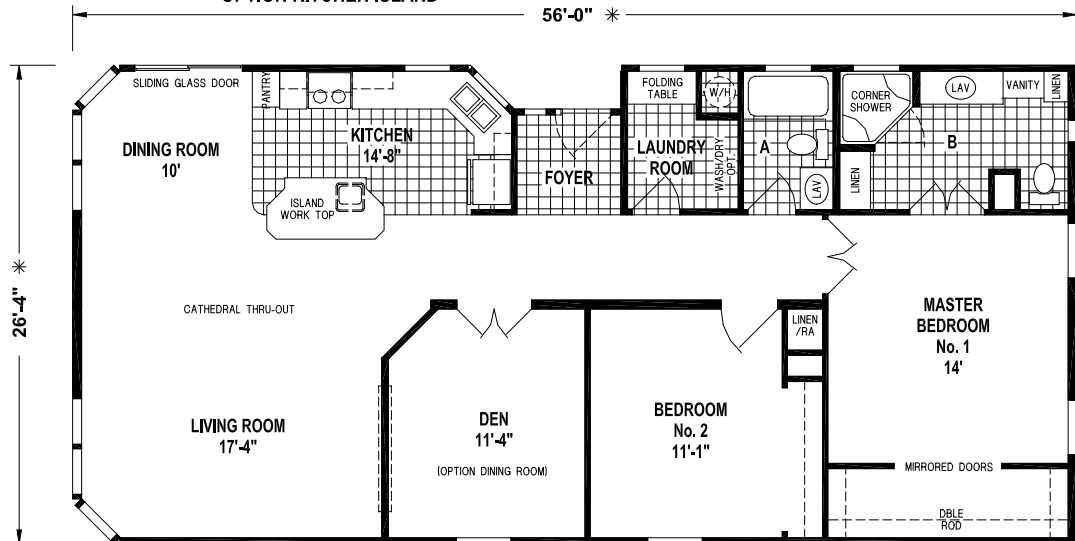
OPTION KITCHEN ISLAND



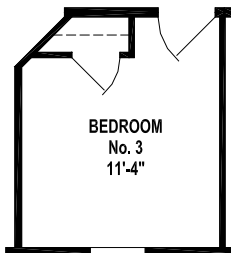
OPTION OVAL TUB BATH



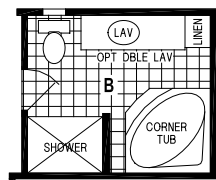
OPTION CORNER TUB BATH



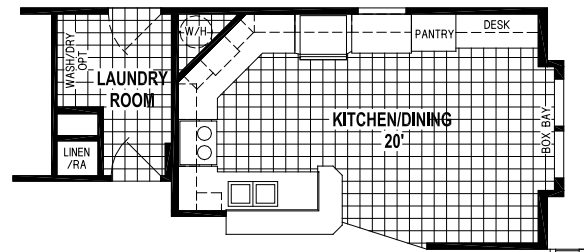
N827CT/5628 (1,445 SQ. FT.) 2BEDROOM - 2BATHS - CATHEDRAL THRU-OUT



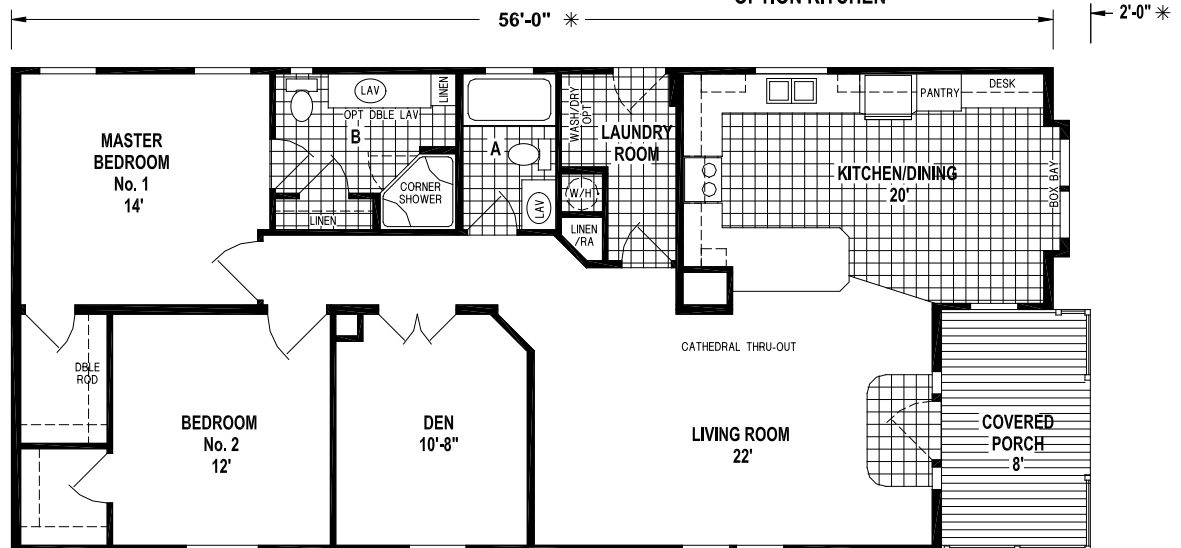
OPTION 3RD BEDROOM



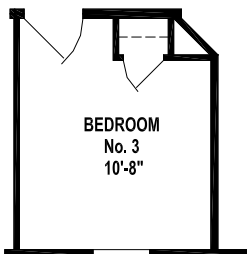
OPTION CORNER TUB BATH



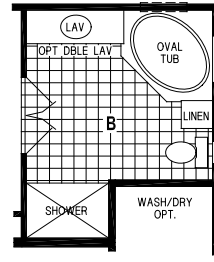
OPTION KITCHEN



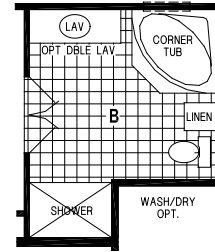
N869CT/56-5828 (1,389 SQ. FT.) 2BEDROOM - 2BATHS - CATHEDRAL THRU-OUT



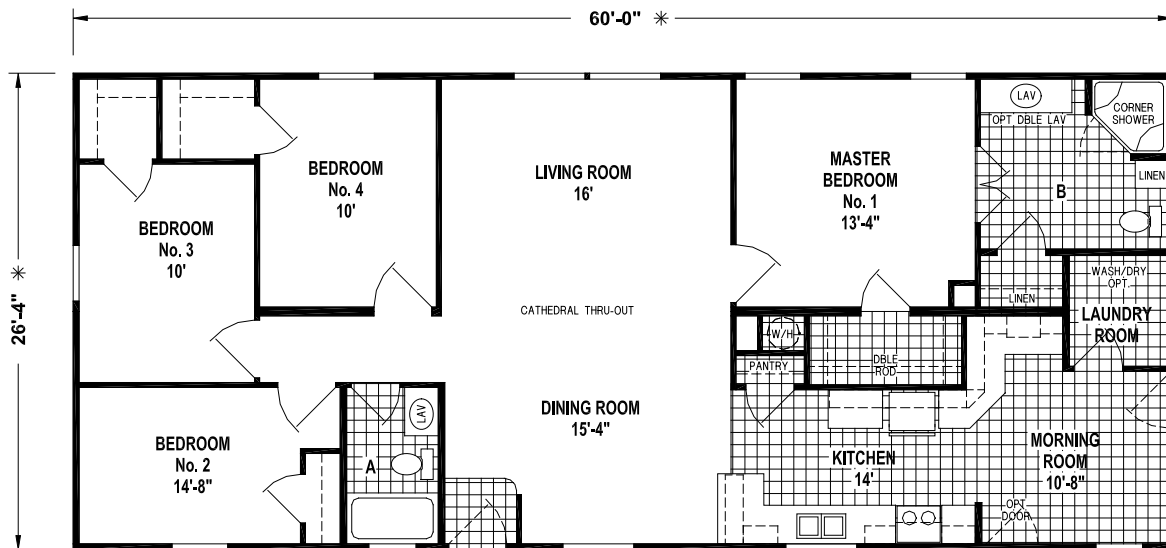
OPTION 3RD BEDROOM



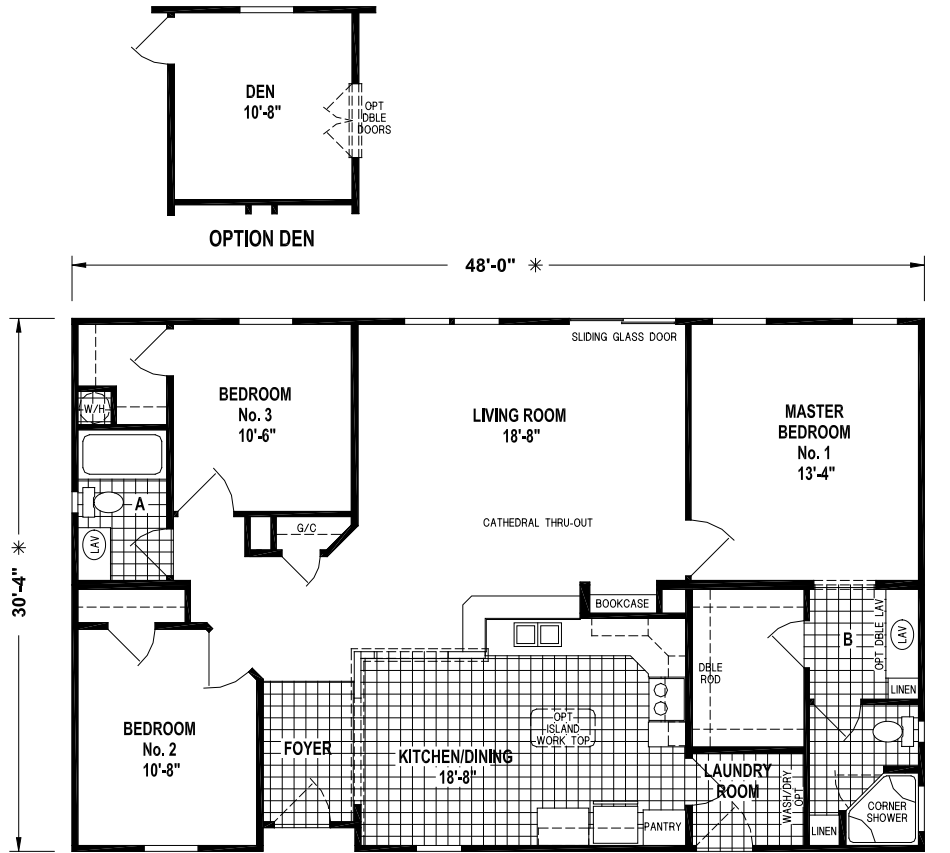
OPTION OVAL TUB BATH



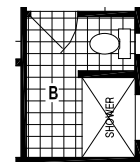
OPTION CORNER TUB BATH



N821CT/6028 (1,580 SQ. FT.) 4BEDROOM - 2BATHS - CATHEDRAL THRU-OUT



N901CT/4832 (1,448 SQ. FT.) 3BEDROOM - 2BATHS - CATHEDRAL THRU-OUT



OPTION 54" SHOWER

Silver Springs Community

22/24/28/32 SERIES

Standard Features

Exterior and Construction

- Detachable Hitch
- Gang-Nail Rafter System
- 25 Year A/R Shingles
- Roof Vents w/Roof Caps
- Dry Ply Shingle Underlayment
- 20# Roof Load
- 7" Overhangs
- Vented Soffit
- Galvanized Drip Edge
- 8'-0" Side Wall Height
- 2 x 6 Exterior Walls
- Vinyl Lap Siding
- 3/8" OSB Exterior Sheathing
- Fiberglass Front Door w/Sunburst Window & Storm
- Fiberglass 9-Lite Rear Door w/Storm
- Dead Bolts
- Sliding Glass Door w/Grids — Per Floor Plan
- Vinyl Single Hung Windows w/Low "E" Glass
- Window Grids
- Perimeter Gang Nailing Floors
- Vapor-Barrier Bottom Wrap
- Sanitary Drain Prep
- OSB Roof Decking
- OSB Tongue & Groove Floor Decking
- Vent for Dryer
- 2 x 6 Floor Joists, 16" O.C. (22, 24 & 28W)
- 2 x 8 Floor Joists, 16" O.C. (32W)
- Moisture Seal On Floors — All Wet Area
- Heavy Duty Steel "I" Beam Frame
- Egress Window in Bedrooms
- Pre-Finished Doors Jamb

Electric

- 200 AMP Electrical Service
- Copper Wiring
- Smoke Detectors w/Battery Backup & False Alarm Control
- Exterior Receptacle w/Ground Fault Interrupter
- Exterior Receptacle Under Home @ Main Water Line
- Ground Fault Interrupter — All Baths
- Ground Fault Interrupter at Kitchen Sink Area
- Easy Access Interior Electrical Breaker Box
- Patio Lights — All Exterior Doors
- Dining Chandelier
- Glass Ceiling Lights
- Lighted Walk-In Closets w/Wall Switch Per Floor Plan
- Wire For Dryer
- Wire/Brace for Ceiling Fan in Living Room & Master Bedroom

Plumbing

- CPVC Plumbing Fittings
- Stainless Steel Kitchen Sink w/Single Lever Faucet & Sprayer
- 30 Gallon Electric Water Heater
- Plumb For Washer
- Water Shut-Off Valves at All Fixtures & Main

Insulation and Air Conditioning

- R-19 Ceiling Insulation
- R-19 Side Wall Insulation
- R-11 Floor Insulation
- Engineered Overhead Duct System
- Whole House Ventilation System
- White Multi-Direction Ceiling Grills
- Filter Grill w/Filter Installed
- 14" Metal Collar Drop-Out For Return Air
- 12" Metal Collar Drop-Out For Air Supply

Living Areas

- Cathedral Ceiling Throughout
- Textured Ceiling
- Door Stops
- 1/2" Finished Drywall Throughout
- Valances w/Wood Blinds
- Plush Carpet
- 5 lb. Rebond Carpet Pad w/Tack Strip
- Closet Maid Wire Shelves in Closets
- Vinyl Floor at Front Door
- Lever Latch Door Handles

Kitchen Features

- Valance w/Wood Blinds
- 18 cu. ft. Frost Free Refrigerator
- 30" Full Size Deluxe Electric Range
- 30" Power Range Hood w/Light
- Bumped Up & Out Overhead Above Range
- Drawer Over Door Base Cabinet Construction
- Oak Flat Panel Cabinet Doors
- Ceramic Bullnose Backsplash
- Designer Cabinet Knobs
- Residential Hidden Cabinet Door Hinges
- Lined Overhead Cabinets w/Adjustable Shelves
- Pantry — Per Floor Plan
- Bank of Drawers
- Recessed Lighting

Bath Features

- Corner Shower Stall w/Clear Glass Doors & 2 Shower Heads (Hand-Held & Waterfall) in Master Bath Per Floor Plan
- Lavatory Mirror
- Power Vent — All Baths
- Oak Flat Panel Cabinet Doors
- Seamless Vanity Tops
- Ceramic Bullnose Backsplash
- Dual Handle Faucet at Lav
- Designer Cabinet Door Knobs
- Residential Hidden Cabinet Door Hinges
- Residential Raised Lav Bases
- Elongated China Commodes
- Towel Bars & Tissue Holders
- Cosmetic Light Bars Over Lav Mirrors
- Radius Shower Rod w/Curtain & Rings at All Tubs
- Area Light w/Vent\
- 1-Piece Fiberglass Tub/Shower in Hall Bath



SKYLINE

BRINGING AMERICA HOME. BRINGING AMERICA FUN.

Visit us at our web site at www.skylinecorp.com

For your comfort and safety, Skyline home designs are approved and inspected for conformance to Federal standards.

* Dimensions stated to industry standards. Width and length dimensions are nominal and are not to be used for setup of home on site; consult selling retailers for exact specifications. Overall length does not include approximately four foot hitch. The square footage is approximate and based upon nominal exterior floor size. Room sizes are measured from floor ends and wall centers.

Because of progressive product improvement, all prices & specifications are subject to change without prior notice or obligation to Skyline Corporation.

Your Retailer, an independent contractor, who is not an agent of Skyline Corporation, is the party responsible for your purchase contract and any additions, deletions, alterations, or attachments made to or in your home.